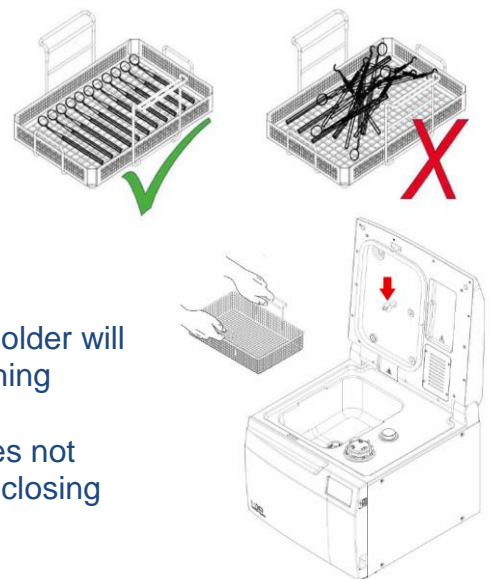


## Loading the Tethys

- Place bare instruments into the basket in an orderly fashion.
- Small items may need to be placed into a holder to stop them falling through the basket holes.
- Do not process complex hollow devices such as Handpieces.**
- Do not overload the basket. Do not stack or pile the instruments.
- Place the basket(s) into the basket holder rack. The holder will fit up to 2 baskets. Lower the entire rack into the washing chamber.
- Check that the rotating nozzle in the lid of the unit does not touch the load and is free to spin when closed before closing the lid completely.



## Cycle selection

- Select from the main screen either the “Last Cycle” shortcut to repeat the last run cycle again or touch the cycle selection area and then choose a different cycle from the description list below.



**Disinfection:** Combines washing, Ultrasonic cleaning, Thermal disinfection and drying to minimise soil, bacteria and viruses on instruments. (The safest option) Cycle time is approx. 35 minutes



**Washing:** Combines washing and Ultrasonic cleaning only – The load will not be thermally disinfected with this option. Take care handling the instruments after removal. Cycle time is approx. 23 minutes.



**Prewashing:** Prevents drying of organic residues on the instruments if left. Washing or disinfection must still be performed before removing the instruments. Cycle time is approx. 7 minutes.



**Custom cycles:** The Tethys has provision for two custom disinfection cycles and one custom washing cycle, programmed for your specific needs.

**Note:** The Tethys can be set to only allow the use of specific cycles for specific users.

- Press the start Button
- Delay start can be set by using the “clock” button.
- Extra drying can be added by pressing the “Dry” button (only available on the disinfection cycle)
- A successful cycle will be indicated by a green “tick” icon.
- Unlock the lid by pressing the key icon.
- Unload the Tethys by lifting the basket holder from the wash chamber.

