

Maintenance and infection control

After every patient

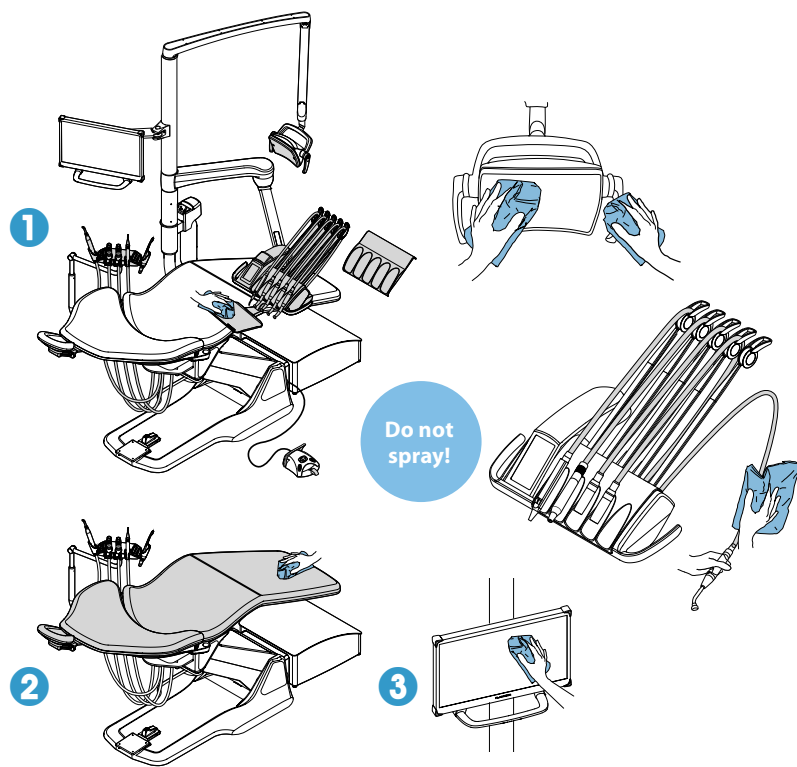
Surfaces

1 Wipe with Planmeca approved surface disinfectant:

- metal parts of headrest
- metal parts of armrests
- front cover of the operating light
- handles of the operating light
- hygienic membrane
- instrument hoses
- instruments (see instrument instructions)
- instrument console*
- balanced instrument arms
- tray table

2 Wipe the upholstery with mild soap- and water solution. Wipe with Planmeca approved upholstery disinfectant if needed.

3 Wipe the monitor and the handle (see monitor instructions).



*Before cleaning the instrument console, lock the touch screen.



Touch screen is unlocked. Press to lock.



Touch screen is locked. Press and hold to unlock.

Before covering the instrument console and touch screen with a protective cover (optional), make sure they are dry.

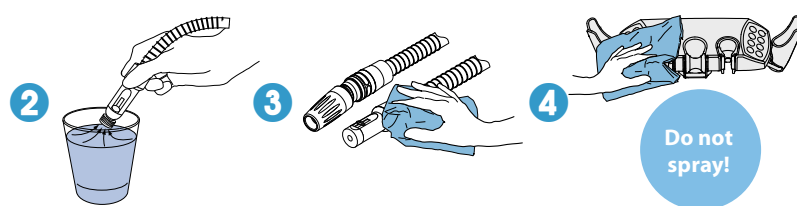
Suction system

1 Remove used aspirating tips.

2 Rinse the suction tubes by aspirating one glass of water with each suction tube.

3 Wipe the suction handpieces with Planmeca approved surface disinfectant.

4 Wipe the suction holder with Planmeca approved surface disinfectant.

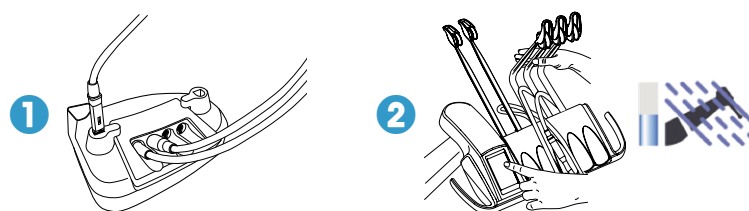


Waterlines

Short flushing

1 Place all water consuming instruments into the flushing holder.

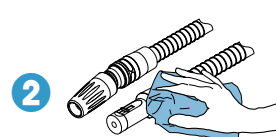
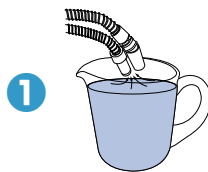
2 Bend the instrument arms to an angle of at least 90° and start short flushing.



In the morning

Suction system

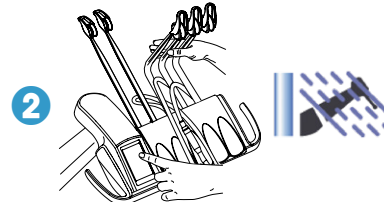
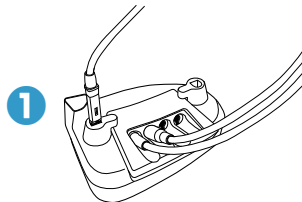
- 1 Rinse the suction tubes by aspirating 0.5 l of water with each suction tube.
- 2 Wipe the suction handpieces with Planmeca approved surface disinfectant.



Waterlines

Long flushing

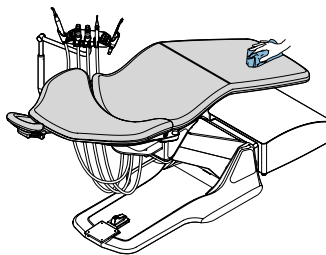
- 1 Place all water consuming instruments into the flushing holder.
- 2 Bend the instrument arms to an angle of at least 90° and start long flushing.



After working day

Surfaces

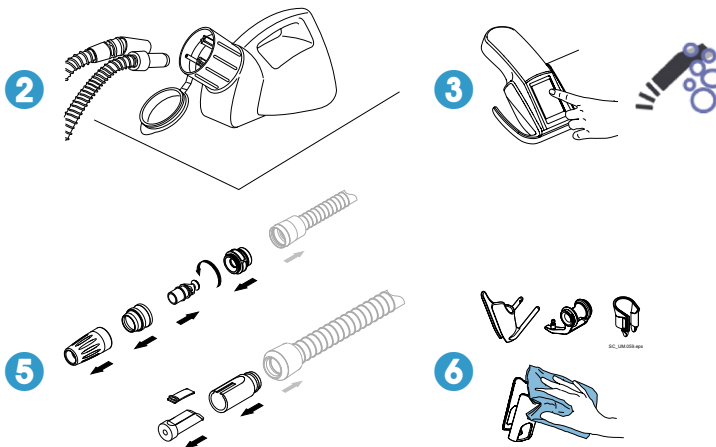
Wipe the upholstery with Planmeca approved upholstery disinfectant.



Suction system

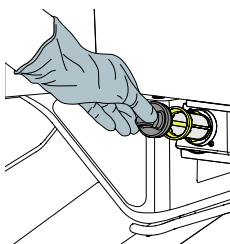
Suction cleaning

- 1 Mix 20 ml of Planmeca approved suction disinfectant with 1 l of water in OroCup.
- 2 Attach suction handpieces to OroCup.
- 3 Start Manual suction cleaning.
- 4 Return the suction hoses back to the holders.
- 5 Disinfect the suction handpieces in a washer-disinfector.
- 6 Suction holder: Disinfect the individual holders in a washer-disinfector. Wipe the intraoral scanner holder with Planmeca approved surface disinfectant.



Filters

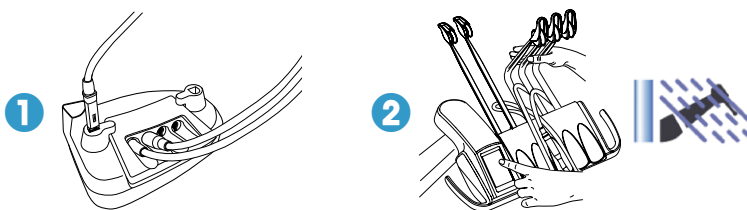
Clean the coarse filter.



Waterlines

Long flushing

- 1 Place all water consuming instruments into the flushing holder.
- 2 Bend the instrument arms to an angle of at least 90° and start long flushing.

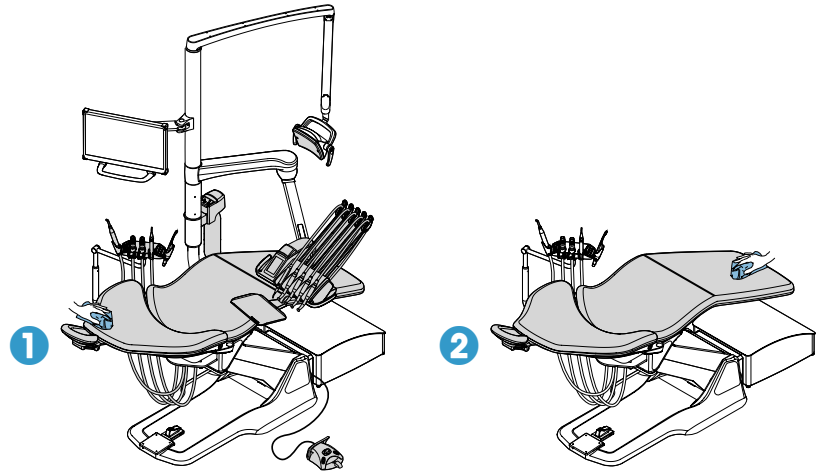


- 3 Switch off the unit.

Weekly

Surfaces

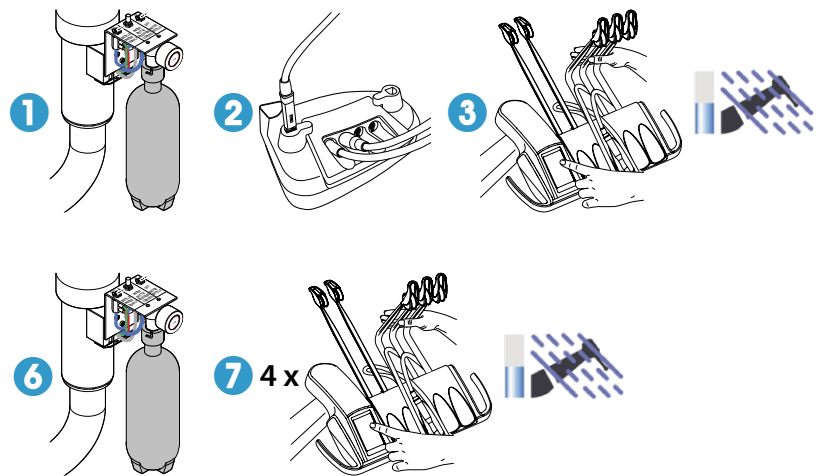
- 1 Wipe all surfaces with mild soap- and water solution.
- 2 Wipe the upholstery with Planmeca approved upholstery treating agent.



Waterlines

Waterline cleaning

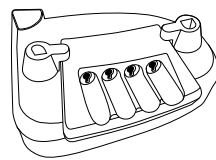
- 1 Fill the clean-water bottle with 2 dl of Planmeca approved waterline disinfectant.
- 2 Place all water consuming instruments into the flushing holder.
- 3 Bend the instrument arms to an angle of at least 90° and start short flushing.
- 4 Turn the unit off.
- 5 The next morning, clean the clean-water bottle using a bottle brush and a mild soap- and water solution.
- 6 Fill the bottle with clean water.
- 7 Bend the instrument arms to an angle of at least 90° and start short flushing. Repeat short flushing at least three more times or until the water is clean.



Monthly

Suction system and waterlines

Clean the instrument flushing holder using a soft brush and a mild soap- and water solution.



Filters

- 1 Replace the coarse filter.
- 2 Empty the oil collector.

