

Maintenance and infection control

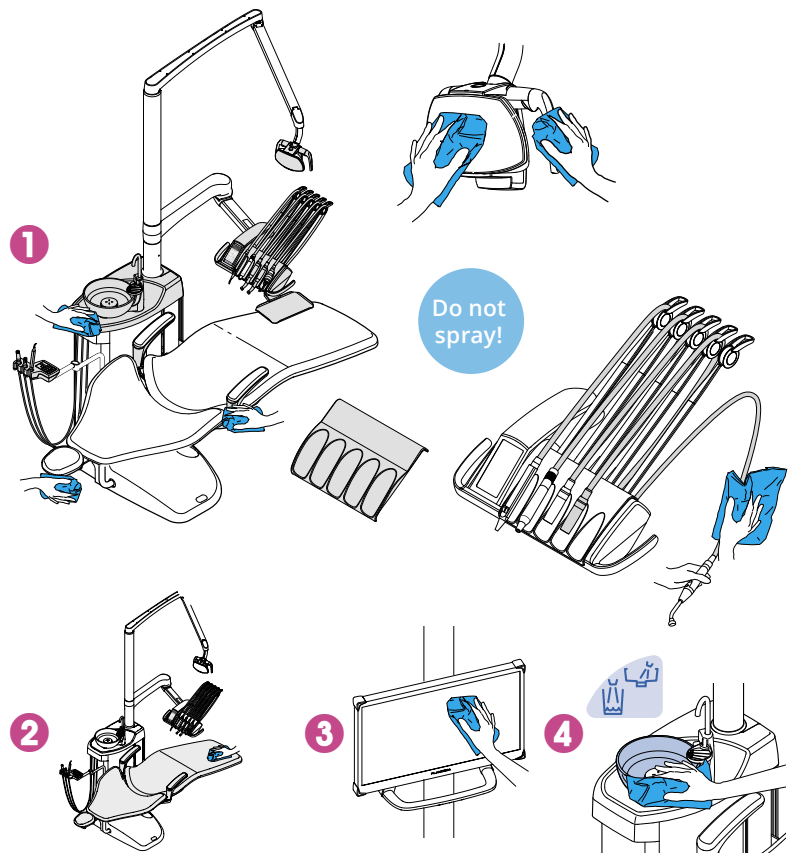
After every patient

Surfaces

- 1 Wipe with Planmeca approved surface disinfectant:
 - metal parts of headrest
 - metal parts of armrests
 - protective fascia of the operating light
 - handles of the operating light
 - hygienic membrane
 - instrument hoses
 - instruments (see instrument instructions)
 - instrument console
 - balanced instrument arms
 - tray table
 - cuspidor top cover

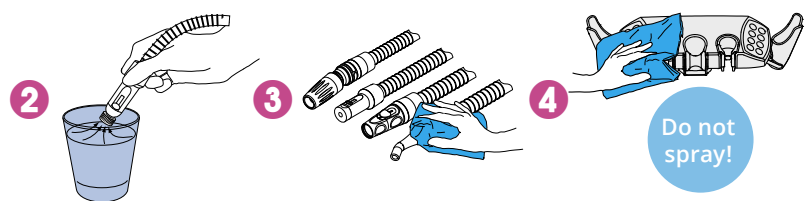
Wipe the patient mirror of the operating light with a mild soap- and water solution.

- 2 Wipe the upholstery with a mild soap- and water solution. Wipe with Planmeca approved upholstery disinfectant if needed.
- 3 Wipe the monitor and the handle (see monitor instructions).
- 4 Clean the bowl:
 - Pour a few drops of Planmeca approved suction disinfectant into the bowl and use a soft brush.
 - Rinse the bowl by pressing the bowl rinse button.
 - Wipe the outside of the bowl.



Suction system

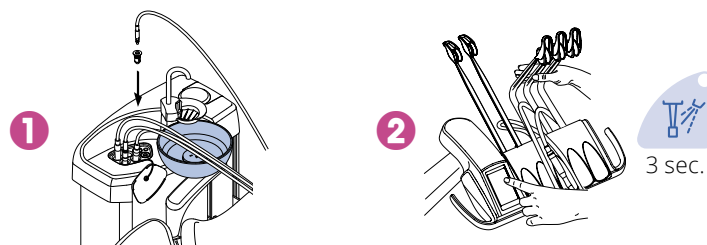
- 1 Remove used aspirating tips.
- 2 Rinse the suction tubes by aspirating one glass of water with each suction tube.
- 3 Wipe the suction handpieces with Planmeca approved surface disinfectant.
- 4 Wipe the suction holder with Planmeca approved surface disinfectant.



Waterlines

Short flushing

- 1 Place all water consuming instruments into the flushing holder.
- 2 Bend the instrument arms to an angle of at least 90° and press the instrument spray button for 3 seconds to start short flushing.



In the morning

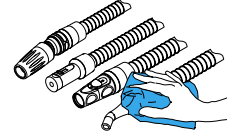
Suction system

- 1 Rinse the suction tubes by aspirating 0.5 l of water with each suction tube.
- 2 Wipe the suction handpieces with Planmeca approved surface disinfectant.

1

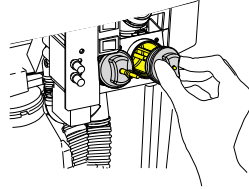


2



Filters

Clean the coarse filters.

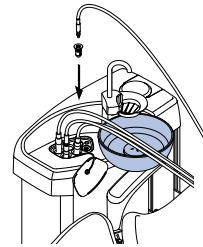


Waterlines

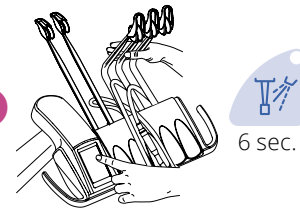
Long flushing

- 1 Place all water consuming instruments into the flushing holder.
- 2 Bend the instrument arms to an angle of at least 90° and press the instrument spray button for 6 seconds to start long flushing.

1



2



Planmeca approved disinfectants

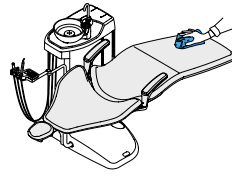
Surface disinfectants*	Upholstery disinfectants	Upholstery treating agents	Suction disinfectants*	Water and waterline disinfectants
Dürr FD 322	Dürr FD 312	Dürr FD 360	Dürr Orotol Plus	Planmeca Planosil™
Dürr FD 333			Orbis Evacuation System Disinfection Concentrate (193087, 193088)	Planmeca PlanPure™
Orbis surface disinfection (MD121936, MD121937, MD125294, MD125295)				Alpro Bilpron
				With Planmeca WEK Green&Clean WK

*Check carefully the cleaning and disinfection agent requirements of 3rd party devices to ensure that using the agents do not have adverse effect to the applicable warranty or other terms and conditions of 3rd party device manufacturers.

After working day

Surfaces

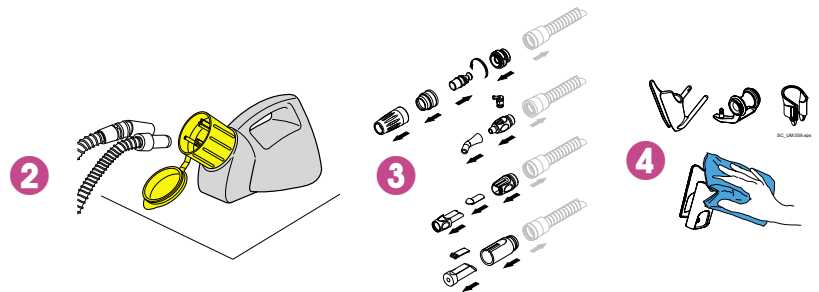
Wipe the upholstery with Planmeca approved upholstery disinfectant.



Suction system

Suction cleaning

- 1 Mix 20 ml of Planmeca approved suction disinfectant with 1 l of water in OroCup.
- 2 Feed the mixture through the suction hoses using OroCup. Return the suction hoses immediately back to the holders.
- 3 Disinfect the suction handpieces in a washer-disinfector.
- 4 Suction holder: Disinfect the individual holders in a washer-disinfector. Wipe the intraoral scanner holder with Planmeca approved surface disinfectant.



Filters

- 1 Empty, clean and disinfect the bowl filter in a washer-disinfector.

Attention! Do not empty the bowl filter to the drain.

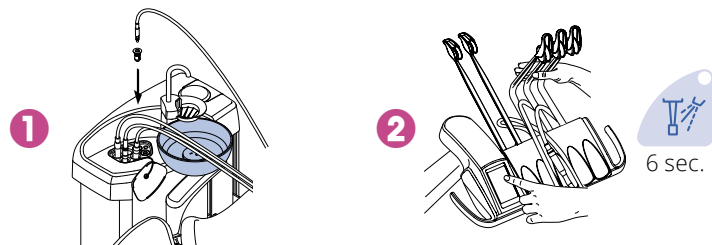
- 2 Remove the bowl and wash at max 65°C.



Waterlines

Long flushing

- 1 Place all water consuming instruments into the flushing holder.
- 2 Bend the instrument arms to an angle of at least 90° and press the instrument spray button for 6 seconds to start long flushing.

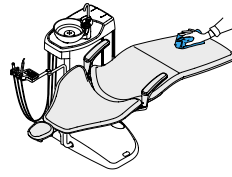


- 3 Switch off the unit.

Weekly

Surfaces

Wipe the upholstery with Planmeca approved upholstery treating agent.

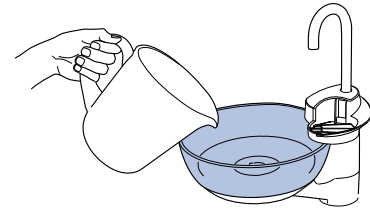


Suction system

- 1 Mix 20 ml of Planmeca approved suction disinfectant with 1 l of water.
- 2 Press the programming button for about 5 s. The bowl valve opens. *Note, Dürr amalgam separators or VS/A systems only.*
- 3 Pour the mixture into the bowl.
- 4 Let the solution affect overnight.



3

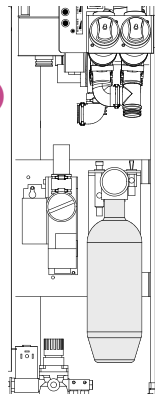


Waterlines

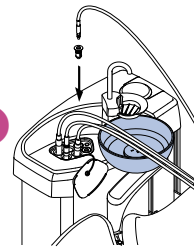
Waterline cleaning

- 1 Fill the clean-water bottle with 1 dl of Planmeca approved water and waterline disinfectant and place it in the dental unit.
- 2 Place all water consuming instruments into the flushing holder.
- 3 Bend the instrument arms to an angle of at least 90° and press the instrument spray button for 3 seconds to start short flushing.
- 4 Switch off the unit and let the solution affect overnight.
- 5 The next morning, switch the unit on.
- 6 Empty and rinse the clean-water bottle and fill it with clean water. Place it back in the unit.
- 7 Perform short flushing at least three times until the water is clear.

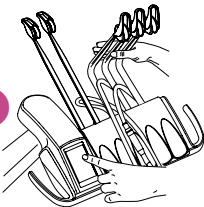
1



2



3



7

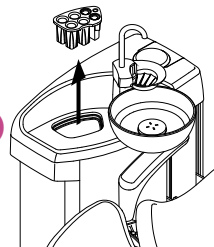


Monthly

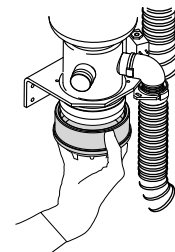
Suction system and waterlines

- 1 Disinfect the instrument flushing holder in a washer-disinfector. Autoclave if needed.
- 2 Empty the amalgam collector when 70% full (Microvac and WET systems only).

1



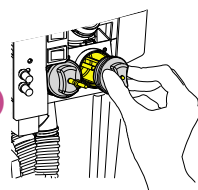
2



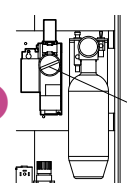
Filters

- 1 Replace the coarse filters.
- 2 Empty the VS/A fine filter.
- 3 Empty the oil collector.

1



2



3

